

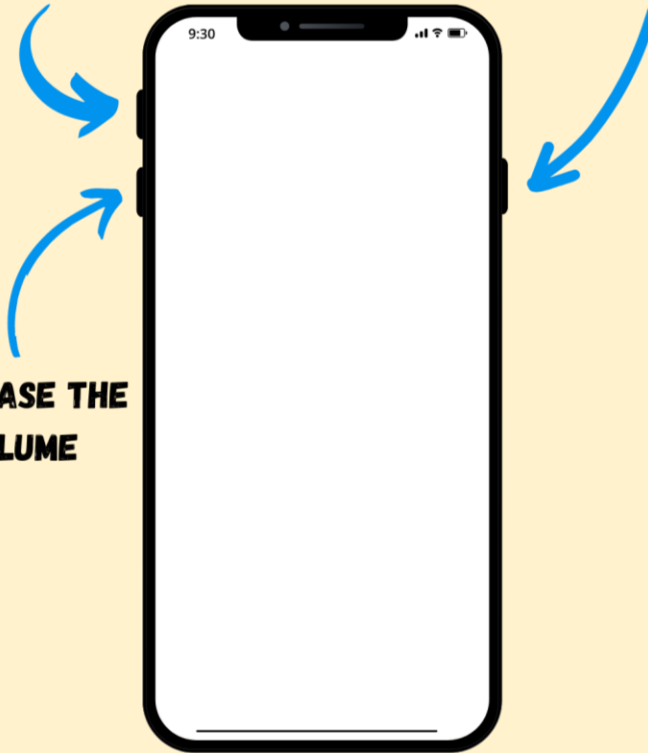
# Need Tech Support?

## Get to know your phone

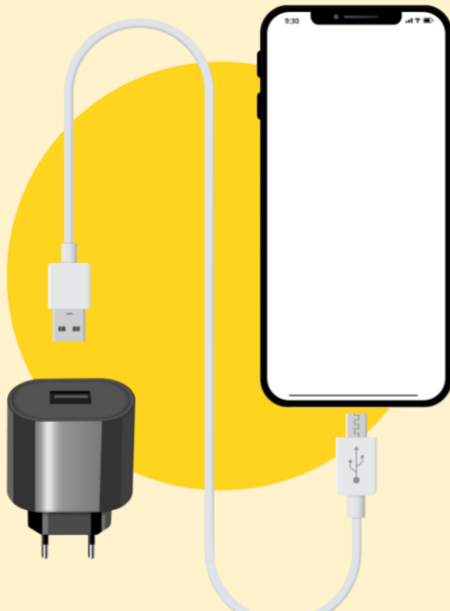
**INCREASE THE VOLUME**

**POWER BUTTON**

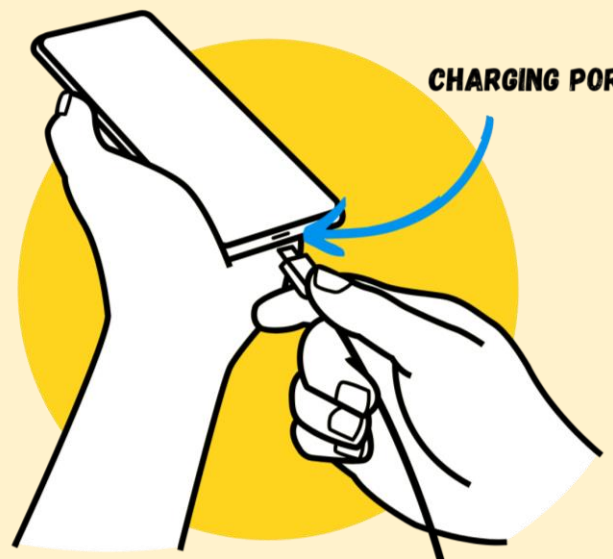
**DECREASE THE VOLUME**



**STANDARD CHARGING SET UP**



**CHARGING PORT**



## Why is my phone turning off?

- If you don't interact with your phone for a certain period of time, you may notice your phone screen going black and "turning off," however this is not the case.
- Your phone is just simply operating on a battery saving feature where if you are not going to be using your phone for a while, instead of the screen staying on, it will "go to sleep."
- To wake up your phone, just tap on the screen and you will be met with the screen you left off on.

